

MAY 2023



NEWSLETTER

BOEING EMPLOYEES' FLYING ASSOCIATION

840 W. Perimeter Rd. Renton, WA 98057 office Ph: (425) 271-2332

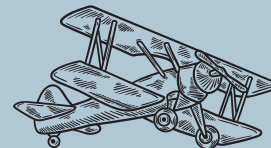


Welcome New Members!

Yonas Yeshanew I PAE
Jennifer iams III PAE
Linda Chism II RNT
Erick Liu II Both
Andrew Hammer I Both
Aaron Constantino I RNT
Daniel O'Shea I RNT
Tonya Delmaestro I Both
Philip Ahlers I RNT
Bonnie Vannatter I RNT
Andrew Pilloud III Both
Patrick Cordell II RNT
Frank Cantwell III RNT
Kale Tarrant III Both

Solos

Ty Seoum Vahey
Shane McLeod Vahey
Bryce Morton Paulay



New Ratings

James Williams IFR Dubbury

President: Bob Moore

Thank you for your Survey participation.

Results: Airport Preference: RNT 61% PAE 28%

Aircraft Preference: C172, C182, RV12.

I was looking for a WACO Great Lakes open cockpit fully aerobatic biplane, red or blue, or red and blue. Perhaps a Cubcrafters EX2, EX3 yellow cub group project, wheels or floats, or wheels and floats. We will refine the survey for a retake at a later date – until we get it right. You can look at Scott's FX3 in our hangar to see the potential of a group kit project. Many of us have built airplanes as a career, here is a chance to do it for fun...not that careers aren't fun. To join this group, please submit your contact information to Rohan who will maintain a group roster.

We are going to continue the highly successful Flying Start program and add some star power: the RV12's. Jordan will be the no-charge CFI. We will continue in 4RY, 440, and 8NF. If you are new to BEFA or haven't flown in 10 minutes, you are probably rusty enough to participate.

We formed a new Float Committee in a hub and spoke format. Scott Hunziker and I will co-chair this group. The float group will consist of all BEFA board members, all BEFA float CFI's, and any member at large able to participate. We will conduct much of this activity remotely by email, phone, zoom, and in person on a limited basis.

Round Table – 1st Saturday of the month 9:00 am

Board Focus Group – 3rd Saturday of the month 9:00 am – both open to all

VP: Joel Purificacion

Upcoming Events

- May 13th
Ranger Creek
- May 20th Bath
& BBQ PAE
- June 24th
Bath & BBQ
RNT
 - See the
flyers
below for
more
details.

Operations Officer: Scott Hunziker

Another month, another rules change.

Several changes, actually. One is to introduce an Instructor Fast Track program, aimed at improving the process for getting new CFIs into our system.

Another change offers a share refund to members in all categories who resign within the first six months of membership.

(Previously, that was offered only for new Guest members.) There are a few other changes, as well. Please see the updated ROP document (Rev K) on the website; a summary of the changes is given in the last section of that document.

Last month I mentioned here that we were on a path to get the floatplane back on the water in May. That plan came off the rails when Regal determined that the floats could not be repaired. As I think you'll read elsewhere in this newsletter, the Board is actively working on this issue.

Our state-managed airports (Bandera, Ranger Creek, etc.) depend on volunteers to maintain them. Seems like a fun way to get involved, meet people, and have an excuse to go flying. We're considering the idea of "adopting" Easton. To gauge interest and learn what's involved, we're first joining a work party at Ranger Creek. Please see the details on a page below. I hope to see you there!

Fly safe, friends!

Safety Officer: Bob Guthrie

Last month I wrote about the coming of spring weather and the expectation of cross country requests, I mentioned the several year old addition of a form requiring the listing of the number of hours till the next AD, sure enough the forms came in and the first three forgot the requirement, surely you can do better this month.

There is another requirement that I have trouble remembering, I know exactly when I got my last six month check ride, but am I current? Maybe not, I know I have cancelled at least six flights this winter, now it is May, and the question is have I flown two hours and made five landings in the last 90 days, as required by rule 19.2.4, fortunately yes, have you?





**Wes McKechnie
speaking to the
Raisbeck Students
before the BEFA
aviation tour and
presentation.**



PAE Flyers:

- **There is now an office door key on all aircraft keys.**
- **No parking inside secured gates.**
- **Rwy 16L-34R clsd btn 0500-1500Z[#]**



**We send our heartfelt condolences
remembering our own
fellow pilot-Bob Walker
April 2023**

Come to the Ranger Creek Work Party!

What? Green River's Annual work party + chili feed

Why? To open Ranger Creek Airstrip for the 2023 summer flying season

When? Saturday, May 13th

Coffee and goodies will be available at 9:00am.

Anyone who can bring a "Pot-O-Chili" and/or corn bread to share is greatly appreciated.

Safety briefing will be at 9:30am. Work starts at 10:00am.

Bring tools if possible. Push broom, tined garden rakes, shovels, grass rakes, small pruners/clippers, and a wheelbarrow if you have the room. Dress in layers for chilly weather. * Remember work gloves.

Where?

For those flying in: "Ranger Creek International" Tower will be in operation on 122.9 by 8:00am. Check with SEA FSS for weather information, as we will try to give a PIREP of the early morning conditions.

***Note you are required to call our Operations Officer if flying in.**

For those driving: Take State Route 410 east out of Enumclaw and at the 30 mile point, look for the "Buck Creek" sign on the right side of the road. Turn right, go over the concrete bridge, continue about 3 blocks, and turn left at the first turn you can make. Then immediately turn left again onto the small dirt road that goes to the airstrip. We will be midway down the airstrip on the east side by the windsock. **For more information call Scott Hunziker (BEFA Operations Officer) at (425) 221-5952.**

Want to make a difference?



Congratulations on your New Rating!



James Williams Instrument

EXPLORE

The World with RV-12

ORGANIZE YOUR TRIP

- *\$140 Hobbs*

a two-seat all-metal side-by-side airplane with a large cabin that seats the occupants ahead of the wing spar for maximum room and superb visibility.

- *All Glass Cockpit*

G3X PFD & MFD & G650

- *100 HP Rotax 912iS*

Top Speed: 125 kts

The light empty weight allows a generous and truly useful load — two 185 lb people, a full tank holding 20 gallons of fuel, plus 50 lbs of baggage.



Congratulations on your *Solos!*



Ty Seyoum

GOAL
Getter
100%



Shane McLeod



Bryce Morton





PAE

BATH & BBQ



**SATURDAY, MAY 20TH,
10AM TO 3PM**



Office: 2916 100th St SW building C70-5 Suite E, Everett, WA 98204

Hangar: 51-09

Food and drinks will be provided.

Please RSVP to Asst.operations@befa.org



RNT Bath & BBQ

SATURDAY, JUNE 24TH, 10 AM TO 3 PM

FOOD & DRINKS WILL BE PROVIDED

PLEASE RSVP TO

ASST.OPERATIONS@BEFA.ORG

N2345Z is back online!

The overhauled engine is back on the plane with most of the break-in hours already flown off. The newly installed Powerflow Exhaust provides a significant performance increase, putting it very close to the 172S models.

If you haven't flown it yet, check out this low-time, great-condition plane.

The aircraft qualifies as TAA (technically advanced aircraft) based on the Dynon Skyview HDX system paired with a Garmin GTN 650 GPS and GNC 255A Nav/Com as well as full engine monitoring instrumentation.

It's a great VFR platform providing lots of situational awareness as well as a very capable IFR platform as the Dynon autopilot supports fully coupled approaches including holds and course reversals very similar to the Garmin GFC500.

While the primary flight display is a glass panel showing a regular EFIS, the system can alternatively show a traditional six-pack configuration for anybody that prefers this for consistency with other BEFA aircraft.

Additionally, it features an Angle of Attack indicator that helps with understanding the stall risks during different phases of flight and maneuvers.

For anybody who couldn't attend my initial training session last year, or would like a refresher, there will be another presentation on Saturday, May 6th from 10 am to 12 pm in the BEFA classroom in Renton. Attending this presentation will count towards the initial checkout requirement.





**BEFA
Summer
2023**



Private Pilot Ground School

- Prepare for beginning private pilot flight lessons

- Aerodynamics/Weather/Navigation, Airport and Airspace Operations, Communications, and FAA Regulations

- Endorsement provided to take FAA written exam upon successful completion

\$490 includes all supplies

- Boeing Employees check with LTP or QTTP for educational voucher

Class Dates:

June 13 thru August 22

Tuesdays & Thursdays

10:00 a.m.-1:00 p.m.

4:00 p.m. - 7:00 p.m.

Classes will be held online (Zoom)

BEFA Ground Instructor:

Oscar Naimi (425) 280-4618



EVERETT
COMMUNITY COLLEGE

Register Today!

EVERETT COMMUNITY COLLEGE

(425) 267-0150

LEARN@EVERETTCC.EDU

Everett Community College does not discriminate based on, but not limited to, race, color, national origin, citizenship, ethnicity, language, culture, age, sex, gender identity or expression, sexual orientation, pregnancy or parental status, marital status, actual or perceived disability, use of service animal, economic status, military or veteran status, spirituality or religion, or genetic information.



Flying Start Program

ATTENTION:

Student pilots & Rusty pilots!

Participating Aircraft

<i>Tail #</i>	<i>Rate</i>	<i>CFI</i>
N704RY	\$100 Hobbs	Wes McKechnie
N78440	\$130 Hobbs	Wes McKechnie
N758NF	\$160 Hobbs	Wes McKechnie
N262BS/N954B	\$140 Hobbs	Jordan Ming

No Charge for the CFI (Wes & Jordan)
They can only log 8 hours a day, so sign up early!

*The Flying Start program allows
New BEFA members to feel welcomed,
encouraged, and given the information
needed for a smooth transition into
their aviation training.*

Thank You Volunteers!



- Bill Sanders for IFR Sim donation to be installed at PAE BEFA
- Brock Blahous for the refresh on our website fleet page
- Oren Peterson for hardware replacement in our RNT Kitchen
- Joerg Zender for unloading ground school supplies
- Scott Hunziker, Fred Quarnstrom, Nick Patrick, and Chuck Malmsten for presentation and simulator time for Raisbeck H.S. Students
- Julia Bitzes for picking up 97PD from Ace
- Eric Behrendt for taking a part to Regal mx.



REMINDER

To gain access to the member documents online such as Quizzes/Checklists/CFI List
Go To: Befa.org

Members Only Login--> "Join us" --> Create account --> Staff Approves 😊

Next Board Meeting: May 18th, 4:00 PM
Auburn Airport Management Conference Room



Aircraft Rates

Boeing Employees' Flying Association (BEFA)

Rates for: May-2023

Airplane	Make/Model	FAA Equipment Codes	Year	Useable Fuel (gals.)	Color(s)	Hourly Rate
N704RY (1)	C150 (M)	/U VFR	1977	22.5	Blu/Wht	\$ 100.00
N78440 (1)	C172 (K)	/G IFR	1968	38	Red/Blu/Wht	\$ 130.00
N739BT	C172 (N)	/G IFR	1978	40	Wht/Blu	\$ 161.03
N737WS	C172 (N)	/G IFR	1977	50	Wht/Blk	\$ 161.03
N2345Z	C172 (N)	/G IFR	1978	40	Blu/Wht	\$ 185.21
N5344K	C172 (P)	/G IFR	1980	40	Blu/Wht	\$ 161.03
N435SP	C172 (SP)	/G IFR	1999	53	Blu/Yel/Wht	\$ 185.21
N97PD	C172 (SP)	/G IFR	2000	53	Blu/Yel/Wht	\$ 185.21
N9537Q++	C172 (R/SP)	/G IFR	1998	53	Wht/Blk/Gry/Grn	\$ 185.21
N2711R	C172 (SP)	/G IFR	2002	53	Gry/Wht/Red/Blk	\$ 185.21
N513MM (1)	Top Cub CC18	/G VFR	2019	44	Yel	\$ 170.00
N954B (1)	RV-12iS	G/VFR	2023	20	Blu/Wht	\$ 142.55
N262BS (1)	RV-12iS	G/VFR	2023	20	Blu/Wht	\$ 142.55
N58628	C182 (P)	/G IFR	1973	75	Blu/Wht	\$ 242.40
N735LH	C182 (Q)	/G IFR	1977	75	Wht/Blu	\$ 212.40
N2365C	C182 (RG)	/G IFR	1978	75	Blu/Wht	\$ 245.76
N38566	BE C24R	/G IFR	1981	57	Red/Gld/Wht	\$ 223.92
N662AJ (1)	Cirrus SR20	/G IFR	2006	56	Wht/Blu	\$ 214.12
N927CS (1)	Cirrus SR22T	/G IFR	2013	92	Red/Wht	\$ 315.06
N93WE	Bellanca 8KCAB	/U VFR	1992	35	Red/Wht	\$ 194.43
N9843Y*	CT210 (N)	/G IFR	1982	87	Red/Wht	\$ 291.85
N758NF (1)	R172K XP-II	/G IFR	1979	68	Wht/Red/Blue	\$ 160.00
REDBIRD	Redbird FMX Sim-M	/G IFR	2011	N/A	Wht/Red	\$ 51.00
REDBIRD	Redbird FMX Sim-NM	/G IFR	2011	N/A	Wht/Red	\$ 86.00
241GX	one-G Foundation Sim-M	/G IFR	2121	N/A	Black	\$ 52.50
241GX	one-G Foundation Sim-NM	/G IFR	2121	N/A	Black	\$ 70.00

All aircraft hourly rates include monthly adjusted fuel rate.

++ R model, but equivalent to SP model after STC mod

Abbreviation: M for Members, NM for Nonmembers

(1) Billed via HOBBS time

*Plus cost for oxygen, if used

Equipment Codes: /G (GPS & Mode C transponder)

/U (No DME & a Mode C transponder)

STAFF CONTACT

INFO

Ops Manager: Wes McKechnie

Work Cell: (425) 919-6552

Operations@Befa.org

Asst. Ops Manager: Jordan Ming

Work Cell: (425) 919-6532

Asst.operations@Befa.org



Office Manager/Editor &
Newsletter Creator: Diana Cassity

Renton Office: (425) 271-2332

Office@Befa.org

Accountant: Millicent Rhoades

Accounting@Befa.org

BEFA INFO

OFFICERS

President: Bob Moore

(206) 718-8543

BefaPresident@Gmail.com

Executive Director: Bob Ingersoll

Vice President: Joel Purification

(206) 251-1608

787Bunny@Gmail.com

Operations Officer: Scott Hunziker

(425) 221-5952

Scott.Hunziker@Gmail.com

Safety Officer: Bob Guthrie

(206) 372-6052

BobGuthrie30@gmail.com

Treasurer: Harium Martin-Morris

(206) 795-9844

HMarmo@Gmail.com

Secretary: Rohan Sharma

(515) 441-3052

RohansSharma92@Gmail.com

SOCIAL MEDIA



@BEFA.Washington



@befa.washington



@BEFA_Washington

PAINE CONTACTS

PAE Focals

Steve Kirsch
Mike Dubbury

PAE Ops

Jordan Ming
(425) 919-6532

PAE Maintenance performed
by Regal Air

BEFA Aircraft Maint. Issues Contact in the order:

Ops Mgr, Wes McKechnie (425) 919-6552
Asst. Ops Mgr, Jordan Ming (425) 919-6532
Emergency/Semi Emergency txt (936) 203-0066
Ops Officer, Scott Hunziker (425) 221-5952
Any Board Member
Ace Aviation